

MIDJ



Toy Stool

design Studio Pastina

Swivel and height-adjustable stool with metal frame in mat laquered metal. Seat and backrest upholstered in leather, faux leather, fabric or customer's fabric.

Toy stool wins over with its fresh and playful design. Rigorous lines outline the cushion shapes, that make the seat soft and comfortable.

Colors and Materials

Structure



Papaya orange steel



Light blue metal



White steel



Ocean blue steel



Bronze metal



Ash grey metal



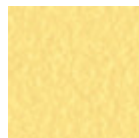
Sand steel



Fango steel



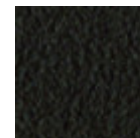
Golden yellow metal



Pastel yellow steel



Light grey steel



Brown steel



Black steel



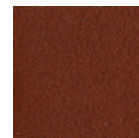
Ocher steel



Facepowder pink metal



Red steel



Bulgaro red metal



Pine green steel

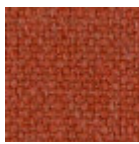


Cherry red metal

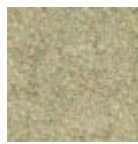


Sage green metal

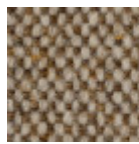
Coating

**Cotton Club fabric**

14 Colors

**Fenix Wool fabric**

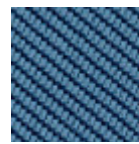
16 Colors

**Main Line Flax fabric**

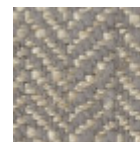
16 Colors

**Manhattan fabric**

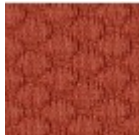
13 Colors

**Tessuto Oceanic**

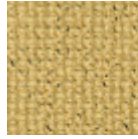
13 Colors

**Second fabric**

11 Colors

**Visual fabric**

13 Colors

**Yoredale fabric**

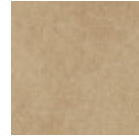
14 Colors

**Velvet Superb**

15 Colors

**Secret faux leather**

23 Colors

**Vintage faux leather**

12 Colors

**Fiore leather**

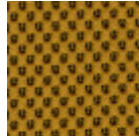
21 Colors

**Vintage leather**

8 Colors

**Flame Fabric**

7 Colors

**Network fabric**

9 Colors

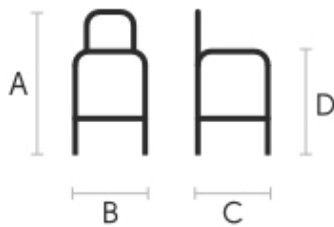
**Ouche Fabric**

7 Colors

**Plain Fabric**

7 Colors

Dimensions



	cm	inch
A	77/92	30.3/36.2
B	46	18.1
C	46	18.1
D	64/79	25.2/31.1

Volumetric Details

Weight 15 Kg**Volume** 0.2 mc**Package** 1

Downloads

Materials folder Toy stool (pdf) - https://www.midj.com/images/uploads/resources/Midj_-_Materials_Toy_2022.pdf

Materials Certifications

Cotton Club fabric

COMPOSITION: 70 % COT; 10% PES; 10% ACR; 10% AF

Abrasion resistance (Martindale) 100.000 cycles

Cotton Club by Flukso is a fabric made from latest generation regenerated cotton yarns. To create this fabric, specific fixing techniques were used, that give it and help maintaining a natural, slightly wavy and vibrated look.

CLEANING AND MAINTENANCE

Regular cleaning is important to extend the life of the coating, and keep its appearance unchanged. Dust and dirt can wear out the coating.

REGULAR CLEANING: vacuum frequently, at least once a week, at a power equal to half the device in use, choosing a smooth spout, without brushing.

STAIN REMOVAL: in case of slight stains, promptly clean the surface. Remove excess liquids or hard parts of dirt with a clean cloth, then proceed on the residue of the stain with a damp cloth or a neutral soap solution.

Remove the stain starting from the edge of the stain moving towards the center of it, then rinse with water. Let dry, avoiding direct exposure to sunlight.

For localized and more persistent stains, promptly dissolve the stain with colorless ethyl alcohol diluted in 20% water, gently rub and then treat with a neutral soap solution, then rinse well. Do not use bleach.